


Christopher Farr | cloth

*Black Mountain Technical Sheet*

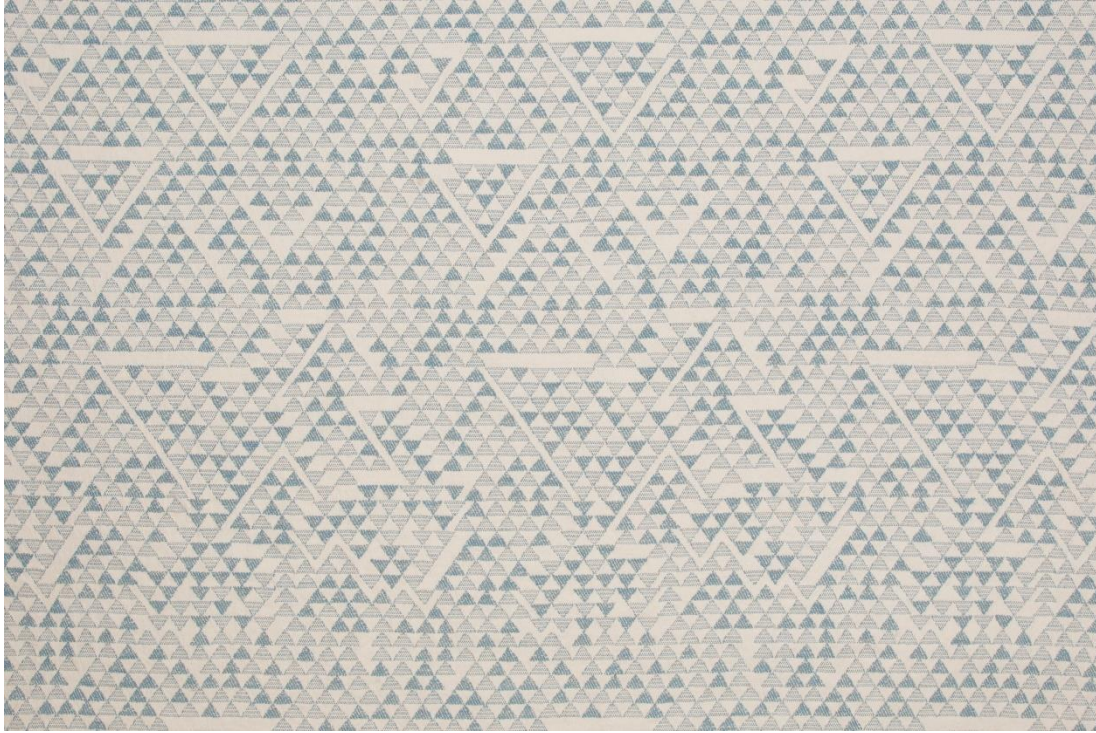


*Black Mountain Honey*


<b>Composition</b>	77% CO 11% PAN 10% PA 1% PES 1% CV
<b>Width</b>	138 CM
<b>Martindale</b>	45,000 Rubs
<b>Roll Length</b>	Max size 25M rolls (sold by linear metre)
<b>Weight</b>	705 g/m <sup>2</sup>
<b>Minimum order</b>	1 Metre
<b>FR Rating</b>	Supplied untreated and untested (Our treatment centre recommends the following to pass UK Domestic Upholstery standards or Contract Crib 5: APNTREAT double treatment of FR Backcoating + FR lamination)
<b>Maintenance</b>	
<b>Commodity Code</b>	5211491000
<b>Country of Origin</b>	Belgium

Christopher Farr | cloth

Camino Real Technical Sheet



Camino Real Denim

<b>Composition</b>	89% LI 11% PAN
<b>Width</b>	129 CM
<b>Martindale</b>	55,000 Rubs
<b>Roll Length</b>	Max size 25M rolls (sold by linear metre)
<b>Weight</b>	567 g/m <sup>2</sup>
<b>Minimum order</b>	1 Metre
<b>FR Rating</b>	Supplied untreated and untested (Our treatment centre recommends the following to pass UK Domestic Upholstery standards or Contract Crib 5: APNTREAT double treatment of FR Backcoating + FR lamination)
<b>Maintenance</b>	
<b>Commodity Code</b>	5309290000
<b>Country of Origin</b>	Belgium




Christopher Farr | cloth

*Hanging 1925 Technical Sheet*



*Hanging 1925 Indigo*

<b>Composition</b>	91% CO 9% PA
<b>Width</b>	132 CM
<b>Pattern Repeat</b>	Horizontal Repeat 33 CM / Vertical Repeat 58 CM
<b>Martindale</b>	60,000 Rubs
<b>Roll Length</b>	Max size 25M rolls (sold by linear metre)
<b>Weight</b>	698 g/m <sup>2</sup>
<b>Minimum order</b>	1 Metre
<b>FR Rating</b>	Supplied untreated and untested (Our treatment centre recommends the following to pass UK Domestic Upholstery standards or Contract Crib 5: APNTREAT double treatment of FR Backcoating + FR lamination)
<b>Maintenance</b>	
<b>Commodity Code</b>	5209490000
<b>Country of Origin</b>	Belgium