

THANK YOU FOR CHOOSING A PIECE OF FURNITURE FROM US;  
SUSTAINABLY MANUFACTURED IN SWEDEN AND CONTRIBUTING  
TO A TRADITION OF SCANDINAVIAN CRAFTSMANSHIP.

#### BEFORE YOU START

Carefully study the assembly instructions (only provided for partially assembled items), and check that everything on the packing list is enclosed before you start.

#### ASSEMBLE

Where necessary.

#### CHOOSE THE RIGHT POSITION

To make the best of a piece of furniture, it should always be correctly aligned with the floor first. Most floors are concave and can cause the item lean forward somewhat. **ALWAYS USE A SPIRIT LEVEL AND ENSURE THE PIECE IS STRAIGHT BEFORE ADJUSTING THE DOORS AND DRAWERS.**

#### ADJUST

All of our storage units have adjustable doors and drawers. They are always set correctly at the factory but may move slightly out of place during transportation.

#### DOORS

Start by removing the small ASPLUND cap on the hinge. Underneath this there are two screws, one for up/down adjustment and one for right/left adjustment.

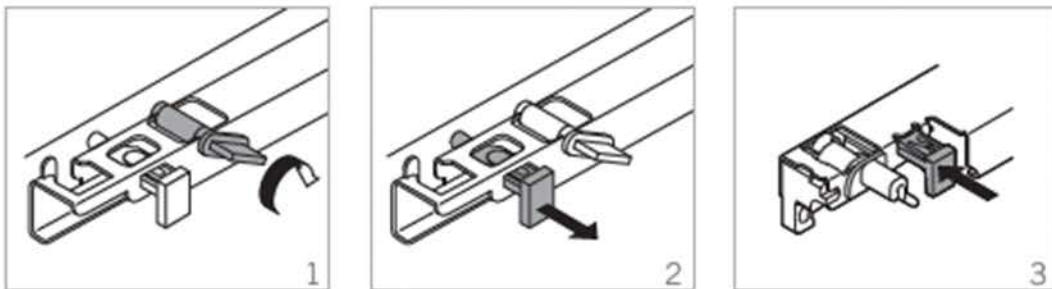
At the back of the hinge is a third screw that rarely needs to be used, for adjusting the door inwards and outwards.

Useful tip: when the screw moves in or out, the hinge moves in the opposite direction. \*See the door adjustment drawings on the back of this sheet.



#### DRAWERS

We use high-quality drawer rails that are updated regularly, so new cabinets may not look the same; however, the adjustment mechanism is usually very similar. There is a small plastic key about 5 cm in beneath both sides of the drawer that can be rotated to adjust the drawer position up and down. \*See drawing 1. If this is still not enough, recheck that the piece is level, take out the drawer by pushing out the security hatch (\*see drawing 2), then lift the drawer out and upwards. On the back of the drawer there is a small hole near each corner. Reinsert the drawer and check that the hook at the end of the rail is properly inserted into this little hole. It is easiest if you do both sides simultaneously. If you have any problems, please contact either your retailer or us directly. We are always ready to help and ensure that you are happy with your item of furniture, both now and in the future.



ASPLUND©

twentytwentyone