

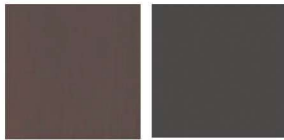
## COLORS & MATERIALS



Aah white oil

Grey oil "Steel"

Dark blue oil



Brown oil "Tar"

Black oil  
"Charcoal"

### OIL

Oil is a fully matt surface treatment which lifts the natural wood appearance.

Gemla uses an environmentally friendly VOC-free 2-component hard wax oil. The oil is absorbed by the fibres and gives a protective layer to the surface.

The oil treatment shall in time be renewed with maintenance oil to maintain it's protection. The frequency of maintenance treatment is depending on the environment and level of usage.

A coloured oil will be patinated with ware and eventually reveal the natural color of the wood.



Ardbeg green stain

English red stain

Dark brown stain SVB770



White lacquer  
NCS 0500-N

Italian umbra  
NCS 8505-Y20R

Black lacquer  
NCS 9000-N



Dark blue lacquer  
NCS 7812-R85B

### STAIN AND LACQUER

Gemla uses 2-component lacquer, sprayed in several layers. The lacquer is created to endure heavy ware, both for residential as well as public usage.

A stained surface has is dyed with color pigments, sealed with a protective clear lacquer. The wood structure remains visible giving a live surface.

A clear lacquer will with time change in color giving the wood a slightly deeper tone.

A painted/lacquered surface is smooth and fully covering without revealing the wood structure.

The color pigments are blended through all layers of coating.



Nature 8800  
(9101)

Cognac 8695  
(9203)

Dark brown 8678  
(9208)



Black 8175  
(9110)

Red brown 8955  
(9209)

Green 8420  
(9201)

### LEATHER

All leather is vegetable tanned, without chemicals and metals, giving a live leather with graceful aging if treated with care.

The leather consist natural variations and in some extent marks as mosquito bites and scars.

These are considered proof of a natural product and not a defect.

For upholstered details a soft 1,2 mm upholstery leather with visible grain is used.

For non upholstered details, such as backrests of VILDA and COLLAGE, a thick and stiff tooling leather is used.

Tooling leather is strong and durable with a flat surface without grain. These color numbers are presented in price list within (bracket).

The difference in tanning process is giving upholstery leather and tooling leather different appearance in structure and color.

*Pictures are only for reference.*

*Due to natural characteristics appearance can vary from pictures.*