

# m o o o i<sup>®</sup>



## Random Light

---

by Bertjan Pot

Designed by Bertjan Pot and introduced in the Moooi collection in 2002, the Random Light has become a best seller right from the beginning. It transmits a feeling of simplicity, softness, lightness and a touch of magic in contemporary style. The production process is a special story by itself: a resin drained yarn is randomly coiled around an inflatable beach ball creating a translucent 3D fabric. The beach ball is then deflated and extracted from a round opening in the lamp. At the end the skin becomes the product. Soft and magic.

---

<b>Designer</b>	Bertjan Pot
<b>Year of design</b>	2001

---

m o o o i<sup>®</sup>

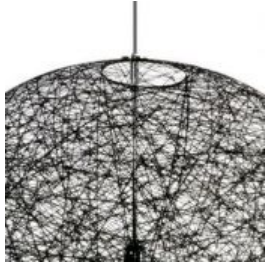
**Material**

fibreglass soaked in epoxy resin, chromed steel pendant

# m o o o i<sup>®</sup>

---

## detailing



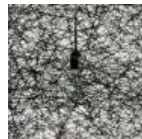
The Random light has a small opening to help with replacing the light bulb.

---

## colours



White



Black

---

## technical (Incandescent version)



E27 x I  
60 W MAX type G  
Cable length 4M (black)  
10M cable available on request  
Plastic white canopy (white shade)  
Plastic black canopy (black shade)



E26 x I  
60 W MAX type G  
Cable length 4M (black)  
10M cable available on request  
Chrome canopy

---

## technical (LED version)



### **small Random LED (CE)**

Power consumption 8,75W (72lm/W)  
Colour temperature (degrees Kelvin, K) 2700K  
(warm white)  
Luminous flux ( Lumen, lm) 636lm

### **medium Random LED (CE)**

Power consumption 11,5W (75lm/W)  
Colour temperature (degrees Kelvin, K) 2700K  
(warm white)  
Luminous flux ( Lumen, lm) 863lm

### **large Random LED (CE)**

Power consumption 11,5W (75lm/W)  
Colour temperature (degrees Kelvin, K) 2700K  
(warm white)  
Luminous flux ( Lumen, lm) 863lm

### **general Random LED (CE)**

Input voltage of 240V ~ 50Hz/ 60 Hz AC  
Power supply included in canopy  
Cable length 4M (black)  
10M cable available on request  
Plastic white canopy (white shade)  
Plastic black canopy (black shade)  
The average service life of Random light LED is 50,000 hours, while maintaining +70% of the light output.



---

## Recommended Dimmers CE 220V-240V

### Manufacturer - Dimmer

BERKER - 286710

BERKER - 2902

BUSCH J - 6513U-102

DIGITALSTROM - GE-KM200

DIGITALSTROM - GE-TKM210

DIGITALSTROM - GE-SDM200

DIGITALSTROM - GE-SDS200

ELARI - ATD 315

ELARI - ATD 600R

ELKO - 3670

ELKO - 420 GLE/I

ELTAKO - EUD61NPN-UC

ELTAKO - EUD12D-UC

ELTAKO - EUD12NPN-UC

EPV - PAB 315

GIRA - 118200

GIRA - 30500

GIRA - 117600/103

INSTA - 51190

INSTA - 53128

INSTA - FUNK 576650 22

INSTA - 51040

JUNG - 1254 UDE

JUNG - 243 EX

LEGRAND - 670 85

LUTRON - LPRPM-4A

LUTRON - GRAFIK INTEGRAL GXI

MERTEN - 5771

MOELLER/EATON - CDAU-01/03

MOELLER - CDAE-01/02

MOELLER xcomfort - CDAU-01/03

OPUS - 852395

SCHNEIDER - WED002311

SCHNEIDER - SBD315RC

SCHNEIDER - ATD 315

SCHNEIDER - 600R

SIEMENS - 5 TC8 284

TRONIC - INSTA 51161

VADSBO - LS220

VADSBO - LD220



---

## technical UL (LED version)



### **small, medium & large random LED (cULus)**

Power consumption 11.3W (42.9lm/W)

Colour temperature (degrees Kelvin, K) 2600K  
(warm white)

Luminous flux ( Lumen, lm) 485lm

Input voltage of 110V ~ 60Hz AC

Power supply included in canopy

Cable length 4M (black)

10M cable available on request

Metal matt white canopy (white shade)

Metal matt black canopy (black shade)

The average service life of Random light LED is 50,000 hours, while maintaining +70% of the light output.

---

## recommended dimmers

### Lutron

Skylark - S-600P/CT-603P  
Nova - NF-10  
Nova-T - NFT-10  
Diva - DVSCCL-153P  
Diva - DVCL-153P/DVWCL-153P  
Diva - CTCL-153P  
Diva - TTCL-100H  
Diva - DV-600P  
Maestro - MA-600  
Lyneo - LLSI-501/LLSI-502 (230V/240V)  
LQSA-4A-D & QSNE-4A-D  
Grafik Eye QSG-3/4/6P-CE  
Rania RNDI-252 (230V/240V)

### Leviton

IllumaTech - IPI06/IPI10/RPI06  
Sureslide - 6621/6631  
Vizia - VPI06

### ELKO

Gli - ELKO 400 Gli (230V/240V)

### Jung

Jung 225 TDE

IMPORTANT! The use of a non-recommended dimmer can lead to unexpected dimming behavior and even non-repairable damage of the fixture and/or driver.

---

## packaging

### random light small & random light LED small

H 53 cm | 20.9"  
W 51 cm | 20.1"  
D 51 cm | 20.1"

Colli 1/1

Product weight:  
1,2 KG | 2,6 lb

With packaging:  
2,7 KG | 6 lb

### random light medium & random light LED medium

H 88 cm | 34.6"  
W 87 cm | 34.3"  
D 87 cm | 34.3"

Colli 1/1

Product weight:  
1,8 KG | 4 lb

With packaging:  
6,2 KG | 13,7 lb

### random light large

H 110 cm | 43.3"  
W 110 cm | 43.3"  
D 110 cm | 43.3"

Colli 1/1

Product weight:  
2,5 KG | 5,5 lb

With packaging:  
13 KG | 28,7 lb

---

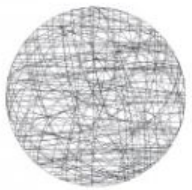
## cleaning instructions

Due to the intricacy of the Random light it is advised to regularly use a feather duster to remove dust particles.

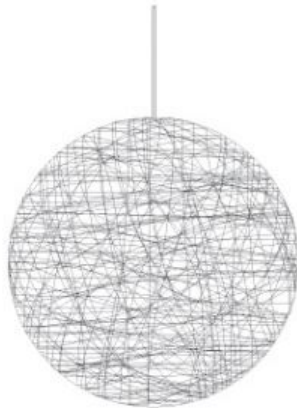
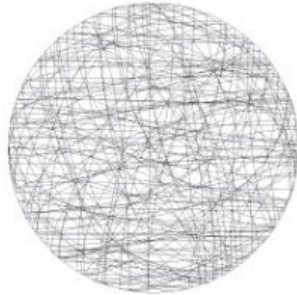
# m o o i<sup>®</sup>

## dimensions

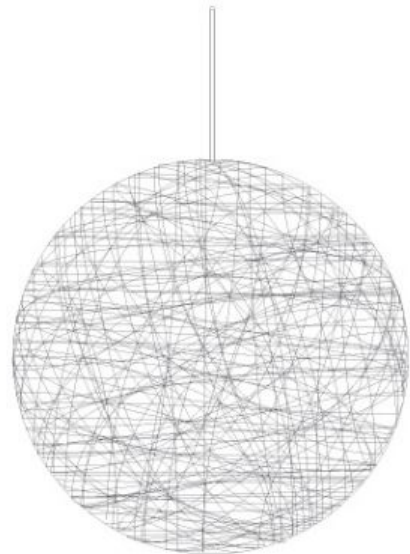
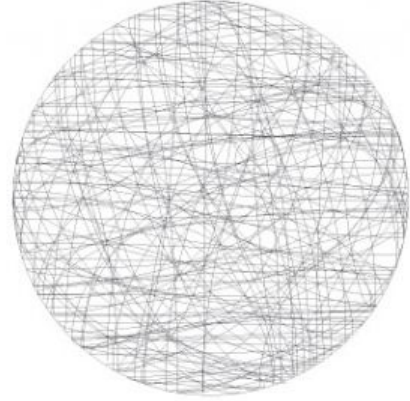
8cm | 3.1"  
ø16cm | 6.3"



50cm | 19.7"



80cm | 31.5"



105cm | 41.3"